



World Meteorological Organization

Weather • Climate • Water

WIS and WIGOS metadata

Silvano Pecora, ARPA, Italy

Meeting of the Working Group on Hydrology and Water Resources
in Regional Association III

Asuncion, Paraguay, 5-9 September 2015

Metadata – a much abused concept please qualify your use

- **Observations Metadata**

- Time-series data that describe how, when and where meteorological observations were made and the conditions they were made under

- **Discovery Metadata**

- Information intended to facilitate the discovery and assessment of a dataset to determine if it is fit for reuse for a purpose that may be at odds with the reason for which it was originally created

- **Data Provenance Metadata**

- Information relevant to climate data that allows end-users, including data managers, scientists and the general public, to develop trust in the integrity of the climate data

- **Data Intellectual Property Metadata**

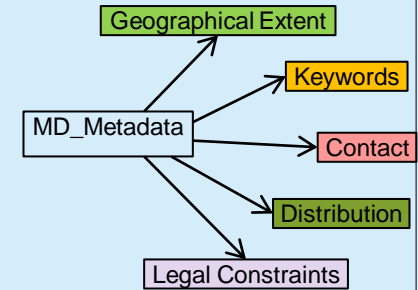
WIS & WIGOS Metadata

WIS

- Make observations discoverable and accessible
 - Describe data policy
- Operational

WIGOS

- ⑩ Describe observation to enable adequate use
 - ⑩ Support rational evolution of observing systems → RRR
- Semantic standard developed and under review
- Formalization coming soon
- Adoption by Members in phases 2016-2020



MD_Metadata: Something somewhere that can be accessed under certain conditions and about which someone knows more.

WIGOS Metadata Standard

Principles

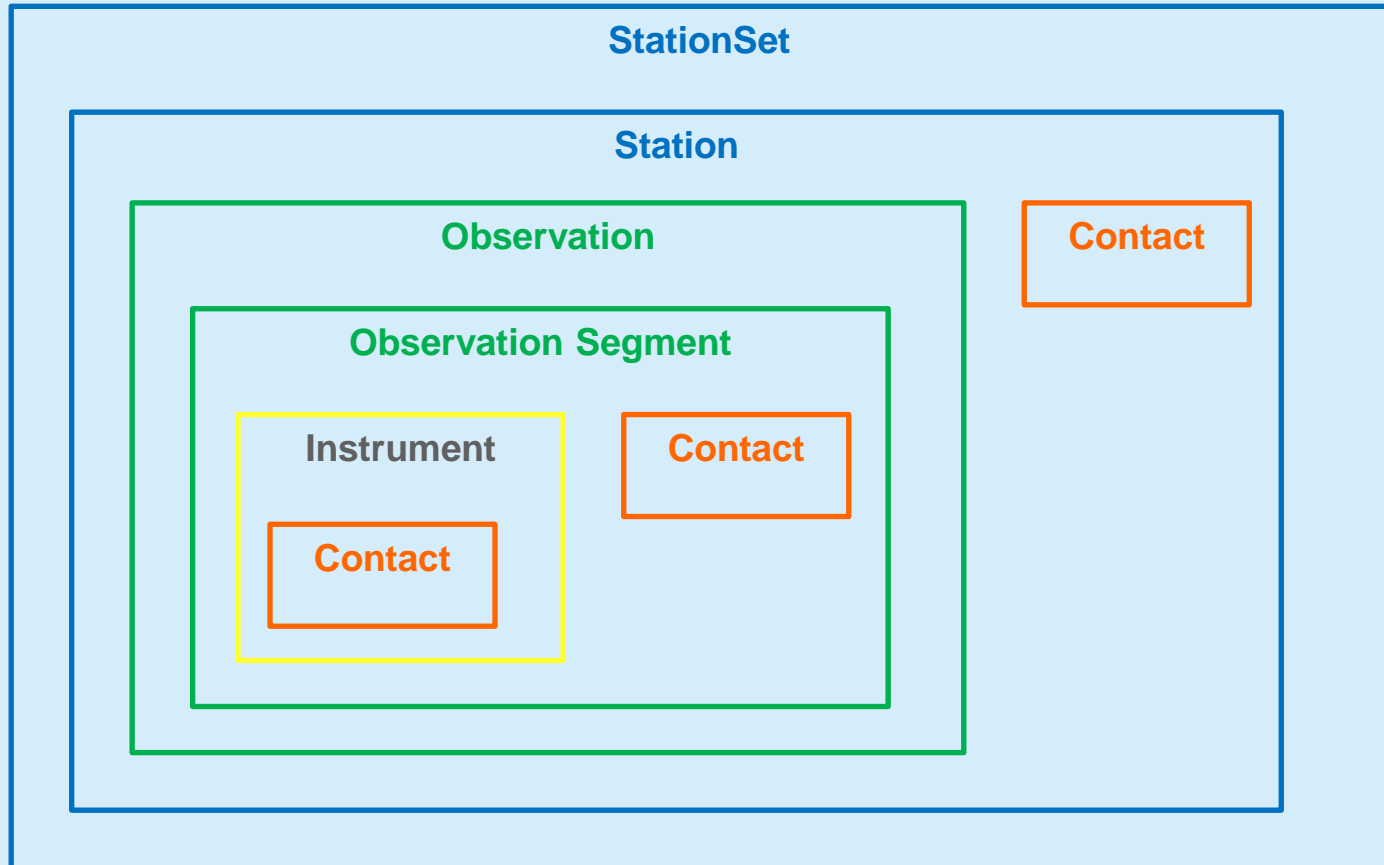
1. Enable adequate use of observations
2. Timestamp every piece of metadata
3. For all internationally exchanged observations
4. For all types of observations
5. Metadata updates in a timely/useful manner
6. Applicable to all disciplines
7. Acceptable to and applicable by all Members
8. Forward-looking but also respecting legacy

Scope, how to square the circle

1. Observed variable
2. Purpose of observation
3. Station/platform
4. Environment
5. Instruments and method of observation
6. Sampling
7. Analysis/processing and reporting
8. Data quality
9. Ownership and data policy
10. Contact

La parte de imagen con el identificador de relación RSD no se encontró en el archivo.

Logical Data Model



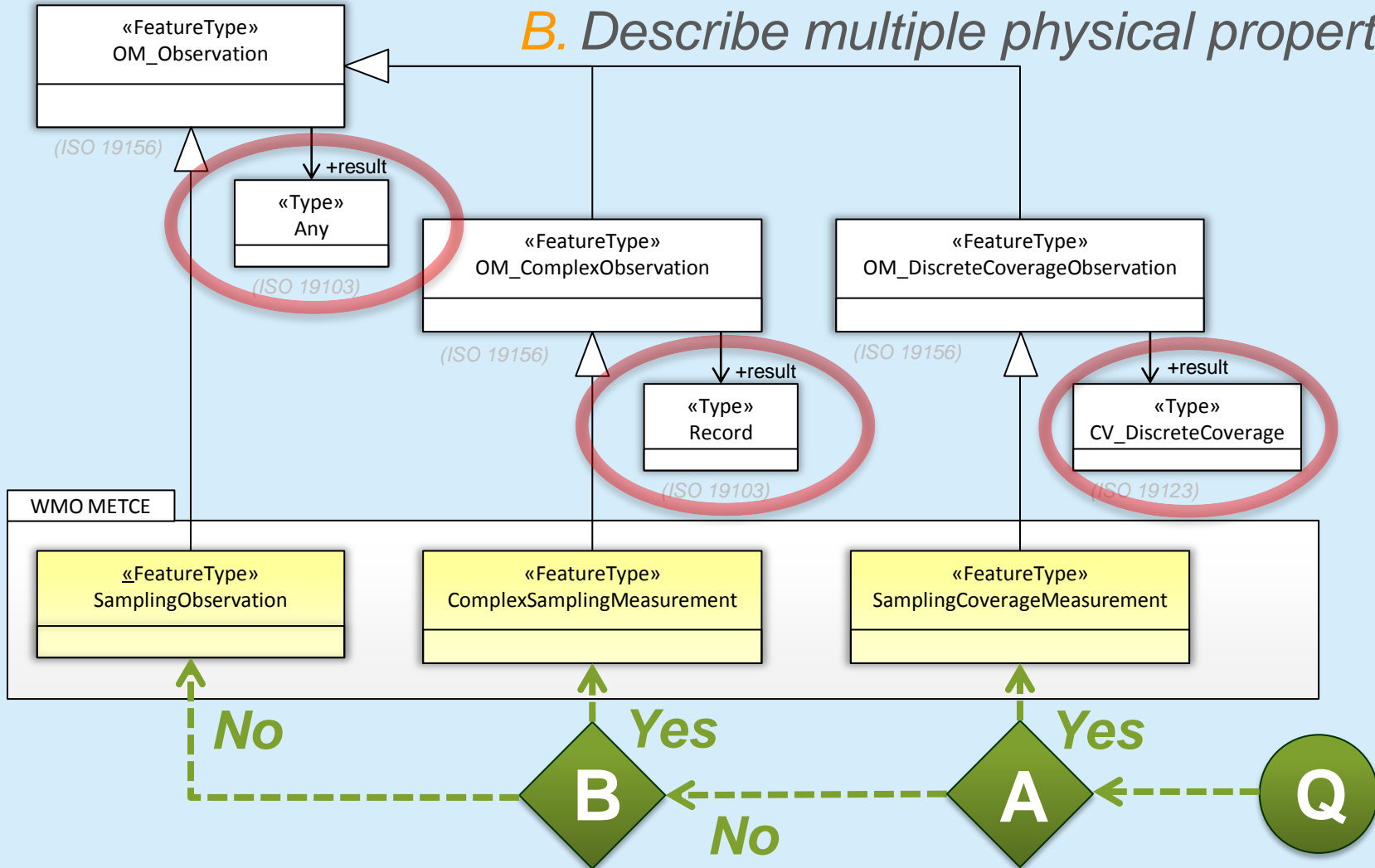
NB: Station=Platform, mobile or fixed

METCE: a *profile* of Observations and Measurements

Does the data collected (e.g. the 'result') from the Observation event:

A. Vary in space and or time?

B. Describe multiple physical properties?





**World
Meteorological
Organization**

Weather • Climate • Water

Thank you for your attention